

Technical Schedule Theater Hall CC Het Gasthuis

Adress: Gasthuisstraat 22
3200 Aarschot

Tel: 016/56 48 24

Technical Manager: Tom Vandenbosch Tel: +32 495 67 41 26

1. Stage Characteristics

- 1.1 Stage Dimensions
- 1.2 Loading and Unloading
- 1.3 Theatre Fabrics and Dance Vinyl
- 1.4 Line Schedule
- 1.5 Electrical Facilities

2. Light

- 2.1 Dimmers
- 2.2 Front bridge
- 2.3 Fixtures
- 2.4 Lighting controls
- 2.5 Intelligent lighting
- 2.6 Cabling

3. Sound

- 3.1 Soundsystem (FOH + Delay)
- 3.2 Sound consoles
- 3.3 Monitor speakers
- 3.4 Microphones

4. Video and projection

- 4.1 Projectors
- 4.2 Cabling

5. Network

- 5.1 Network structure

6. Additional facilities

- 6.1 Grand piano
- 6.2 Stage elements

7. Seating area

- 7.1 Seating

8. Loges

9. Floorplan theaterhall

Technical Schedule Theater Hall CC Het Gasthuis

1. Stage features

1.1 Stage dimensions

Stage area: 11.60m (width between proscenium arches) x 8.09m (depth from stage edge to back curtain).

Forestage accessible via steps on the left and right: 11.60m (width between steps) x 2.50m (depth from stage edge to front curtain).

On both sides next to the stage area (stage left and stage right), there are wings each 2.00m wide.

Height of the stage from the auditorium floor: 0.74m

Maximum height between stage floor and maximum height of fly bars:
8.00m

1.2 Loading and unloading

Loading and unloading takes place at the loading dock (side of the building) next to the stage.

The dock is equipped with a scissor lift measuring 1.50m x 3.10m, with a maximum load capacity of 2000kg.

Dimensions of the door at the loading dock: 2.00m (width) x 2.23m (height)

1.3 Theatre textiles and dance vinyl

All theatre textiles are of the type Velours Verdi, color Black, Flame Retardant NF P 92-503 / M1, and consist of:

- 1x Front curtain (guillotine opening, electrically operated in 7 sec. stage right)
- 1x Rear curtain ecru 10m x 9m
- 6x Legs 1.5m x 8m
- Friezes: 10m x 1.5m

The stage floor consists of black lacquered parquet flooring.
Black dance vinyl covers the entire stage area and the forestage.

1.4 Line Schedule

In total, there are 10 electric scenery fly bars, each with a maximum load capacity of 250kg.

Control of these fly bars is individual, and their speed cannot be adjusted.
The control panel is located on the side of the stage (stage right).

Line Schedule: see attached auditorium plan

Maximum distributed load 250KG

Maximum point load 125KG

1.5 Electrical facilities

Clean power for sound: 2 x 240V/20A stage left and stage right

Other: 400V/63A stage left and stage right

400V/32A stage left and stage right

2 x 240V/20A stage left and stage right

2. Light

2.1 Dimmers

90 dimmers: 2.5kW per channel

1 dimmer per channel, soft patching from the lighting console, no hard patch

Residual current device (RCD) per 10 dimmer channels

House lighting on 2 dimmer channels or fully RGBA (Chauvet Ovation H605-FC)

2.2 Front bridge

14 Robe Robin T11 Profile fixtures rigged in fly bars.
Mode 3 (22CH) for full control,
1-channel dimmer control via our GrandMA3 with morph show.

2.3 Fixtures

12 PC fixtures 2Kw (ADB)
28 PC fixtures 1Kw (ADB)
8 Profile fixtures 1Kw (ADB DW 15°-38°)
4 Profile fixtures 1Kw (ADB DS 15°-31°)
12 ACP fixtures 1Kw asymmetrical (ADB ACP1001)
40 Par64 fixtures (lamps CP60, CP61, CP62)

All fixtures are equipped with CEE plugs, barndoors, iris, gobo holders, and shutters.

Individual stands, floor stands are available.

Full range of LEE color filters in stock (approximately)

2.4 Lighting controls

1 Grand MA 3 OnPc command wing
1 ETC Colorsource AV lighting console
1 ChamSys Compact Connect wing for PC

2.5 Intelligent lighting

28 Robe Robin T11 Profile fixtures (14 fixed as Front and 14 loose units)
8 Chauvet R1 Beam Wash fixtures
12 Robe Robin LEDBeam 150 fixtures
12 Briteq BT Meteor Moving Head fixtures
1 Strobe light (DMX controllable, 2Kw)
6 Ovation CYC 1 FC fixtures (LED cyclorama lights)
1 Antari HZ500 hazer
12 Chauvet Freedom Par Hex-4 fixtures (uplighters)

2.6 Cabling

DMX connection between control room and dimmers, with DMX splitter on stage (stage right, 5-pin and 3-pin) CEE verlengkabels, splitters, overgangen shuko

3. Sound

3.1 Soundsystem (FOH)

Parterre (Front of House): Meyer Sound

2 x UPQ

2 x UPA (p2) Infill

3 x UPM under the balcony

2 x 500HP sub

Balcony: 2 x UPA (p1)

The sound system is managed by Galileo 616.

3.2 Sound consoles

Allen & Heath Avantis + 2 x digital stage box + Cat5 cable

Midas M32 + digital stage box + Cat5 cable

Midas Verona

Allen & Heath Mixwizard WZ3 14:4:2

3.3 Monitor speakers

8 NEXO PS15

2 Turbosound Tcs12M

6 active monitors (Behringer Eurolive B212D)

3.4 Microphones

Full range of high-quality condenser and dynamic microphones,
DI boxes, microphone stands, and cabling

4 Sennheiser ew G4 wireless microphones and headsets

4 Video en projection

4.1 Projectors

Projector Vivitek DUGG93ZBK DLP (8000 lumens) fixed in the hall.

4.2 Cabling

HDMI over ethernet from stage to control room

5 Network

5.1 networkstructure

Full network for lighting (Art-Net, sACN, ...),
Sound (Dante, ...),
Video (HDMI, ...)
over ethernet

6 Additional facilities

6.1 Grandpiano

Yamaha C6

6.3 Stage elements

20x Stage platform sections 2.00m x 1.00m (heights 0.20m, 0.40m, 0.60m, 0.80m)

7 Audience area

7.1 Seating

Parterre: 280 numbered seats

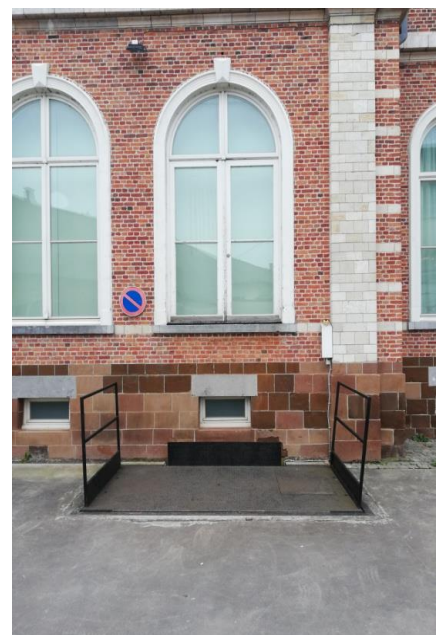
Balkon: 120 numbered seats

8 Loges

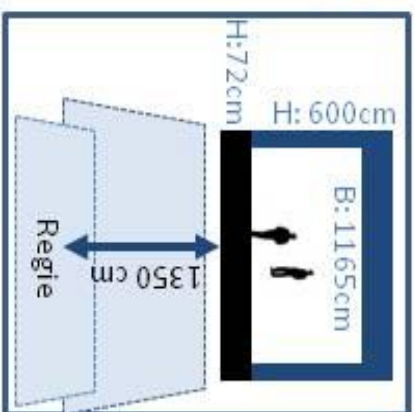
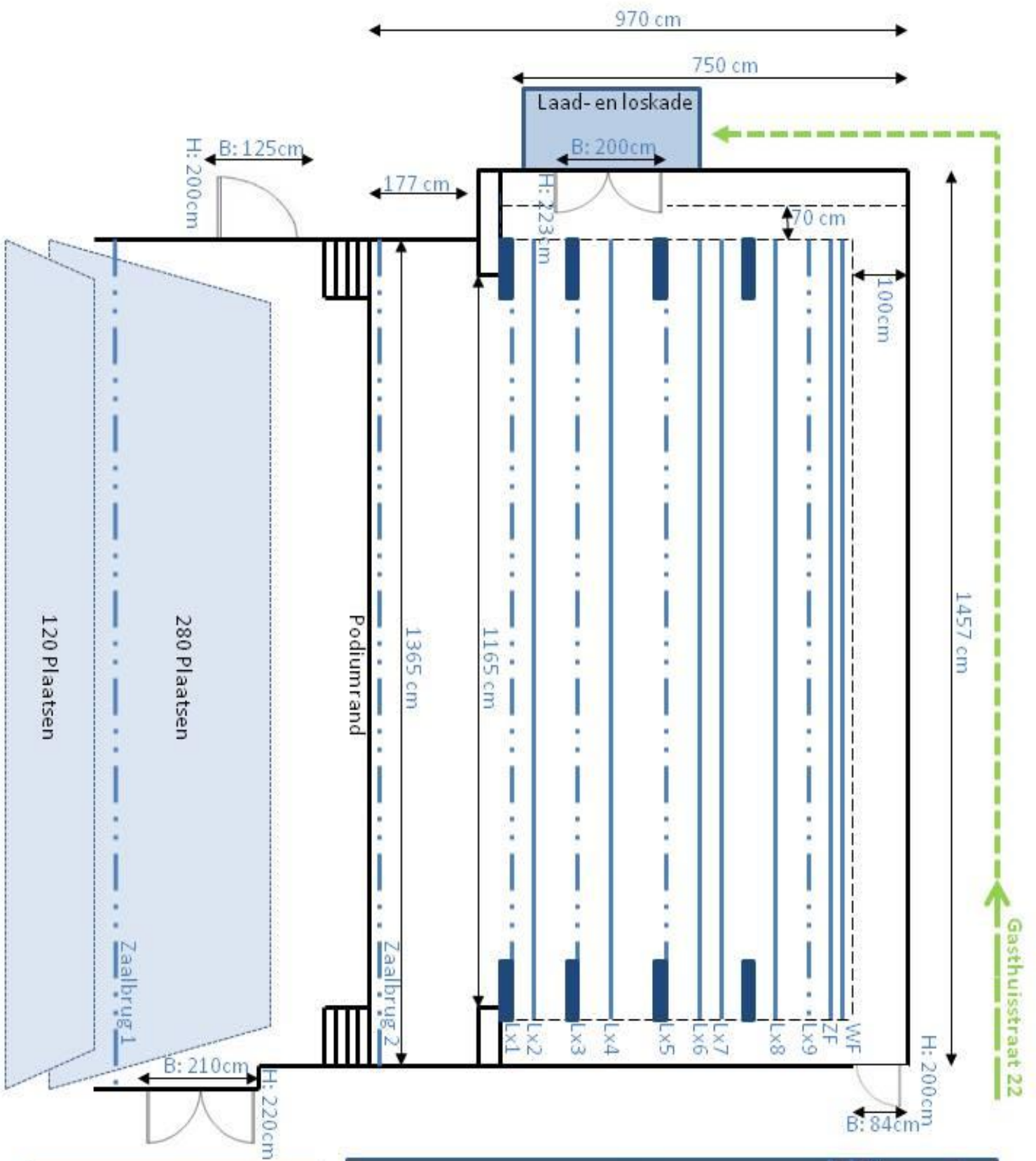
4 heated loges, with toilet and shower

9 Floorplan of the theaterhall

See attached Auditorium Plan







| | |
|---------------------------|------------------|
| Alg Hoogte: 993cm | |
| Mechanische Licht trekken | |
| L : 1063cm | |
| H : 850cm max | |
| — — — — — | Bekabelde trek |
| — — — — — | Decor trek |
| — — — — — | Witte Fond 838cm |
| Zwarte Fond 809cm | |
| Lx9 | 764cm |
| Lx8 | 710cm |
| Lx7 | 618cm |
| Lx6 | 574cm |
| Lx5 | 519cm |
| Lx4 | 430cm |
| Lx3 | 374cm |
| Lx2 | 310cm |
| Lx1 | 278cm |
| Front2 | 45cm |
| Podiumrand | |
| Front1 | 430cm |